

<http://www.yachtworld.com/kirbyyachtsales>

Kirby Yacht Sales
360 Countryside Lane
Williamsville, NY 14221, USA

Toll-free: 866-364-2253
Tel: 716-440-2096
mark@kirbyyachtsales.com



S 2 8.5– It Matters

- Year: 1985
- Price: USD 16,500
- Location: Rochester, NY, USA
- Hull Material: Fiberglass
- Fuel Type: Diesel
- Condition: Used

This S2 is in great condition Used only in fresh water since new Comfortable family oriented design with a big cockpit with wheel steering. Halyards and control lines lead aft Self tailing sheet winches Genoa furling and a dodger.

Turn key and ready for her next owner Recently surveyed stored indoors

Additional Specs, Equipment and Information:

Builder/Designer

Builder: S 2

Dimensions

LOA: 28 ft

LWL: 22 ft 6 in

Beam: 9 ft 6 in

Max Draft: 4 ft 6 in

Engines

Number of Engines: 1

Engine Make: Yanmar

Engine Model: 2GM

Dimensions

Displacement: 7600

Engines

Total Power: 13

Accommodations

- Dining table folds into main bulkhead
- Teak and holly cabin floor
- Berths for 5

- Private enclosed head
- Galley with sink and alcohol stove

Electronics

- Knotmeter
- Depthfinder
- VHF Radio
- 12V Batteries

Deck

- Harken Furler
- Self Tailing Sheet winches
- Cabin top mounted halyard winches
- Lifelines and pulpits
- Swim Ladder
- Wheel Steering

Sails Canvas &Additional

- Mainsail and Cover
- AP Furling Genoa
- Dodger
- Steel Cradle
- Safety Equipment
- Anchor Locker on Deck

Disclaimer

The Company offers the details of this vessel in good faith but cannot guarantee or warrant the accuracy of this information nor warrant the condition of the vessel. A buyer should instruct his agents, or his surveyors, to investigate such details as the buyer desires validated. This vessel is offered subject to prior sale, price change, or withdrawal without notice.





Photo 5



Photo 6



Photo 10





Photo 11



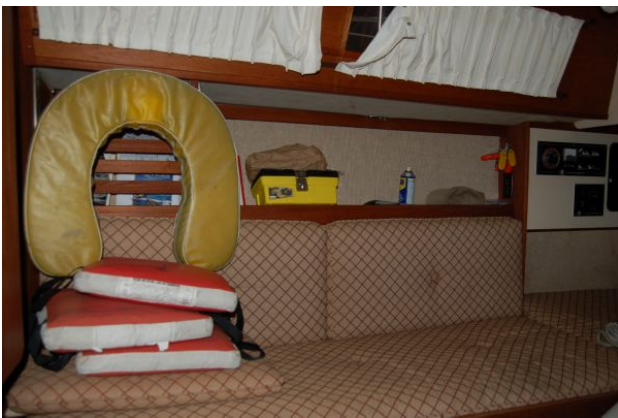
Photo 12



Photo 13



Photo 14



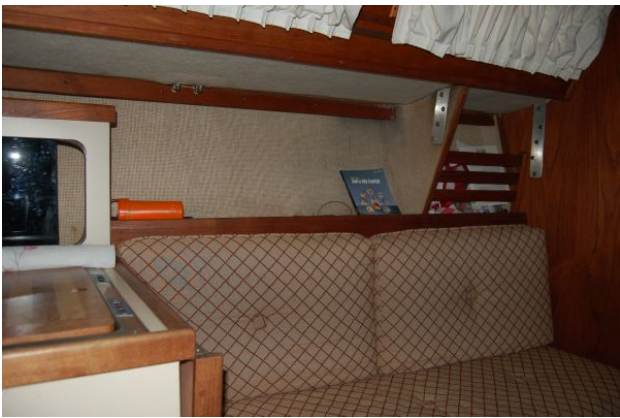


Photo 15



Photo 1